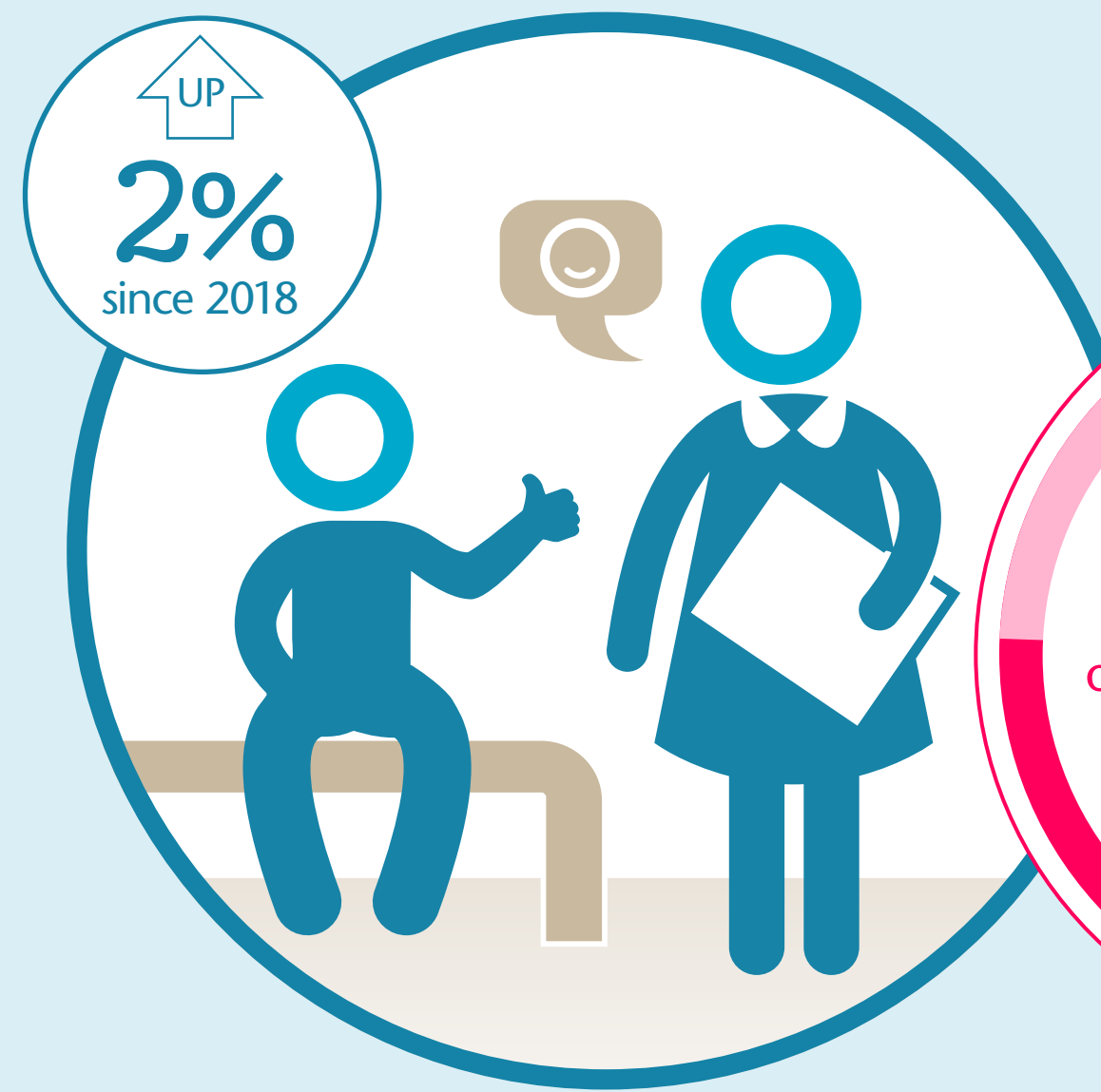


# Urgent and Emergency Care Survey 2020: Type 1

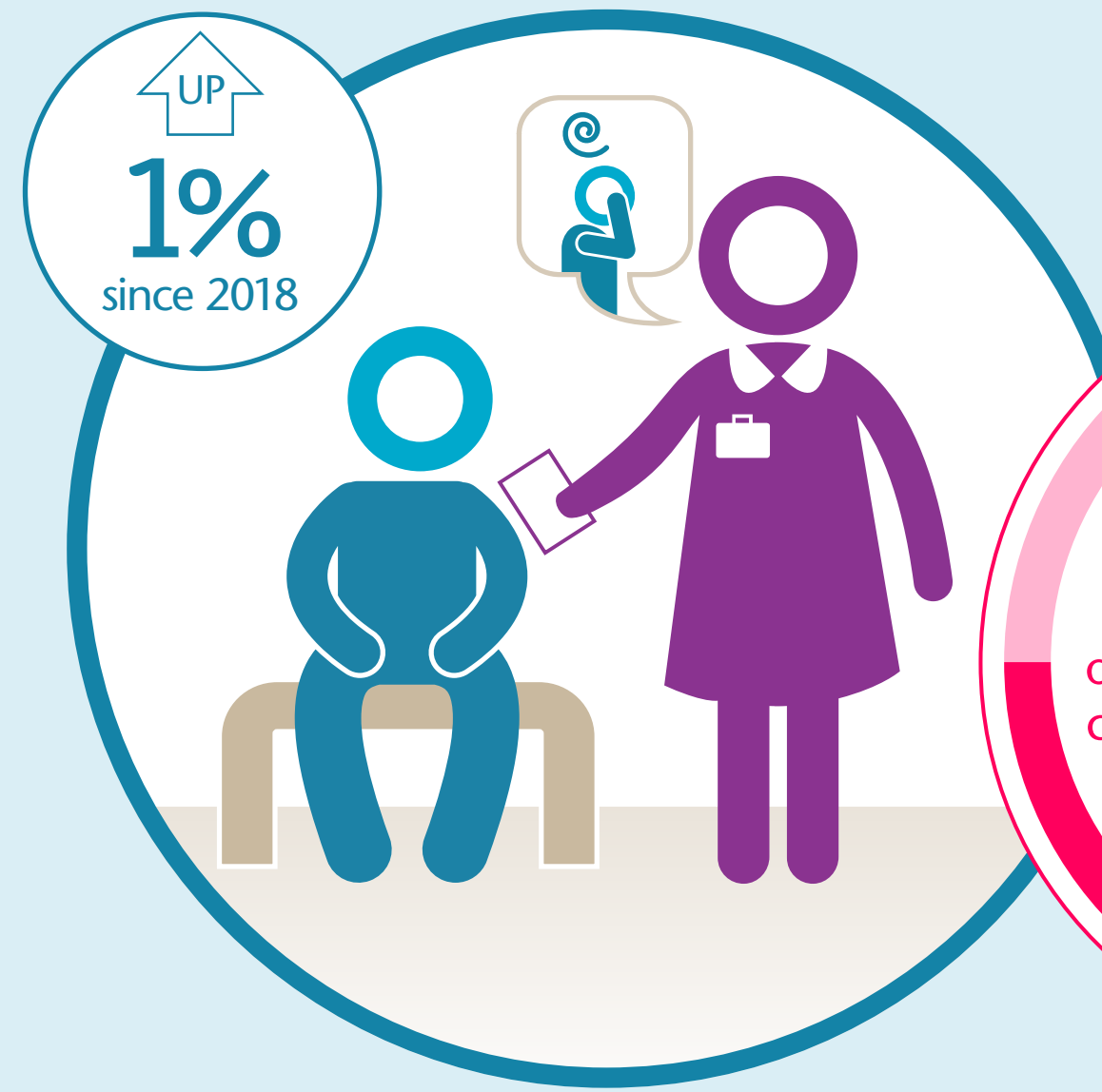
A Type 1 department is a major, consultant-led A&E department with full resuscitation facilities operating 24 hours a day, 7 days a week.

The 2020 survey had 126 NHS Trusts take part, with responses from 41,206 patients. Feedback was from a sample of patients who attended A&E in September 2020. **During this period, Covid-19 hospitalisations were relatively low but rising.**

## New measures implemented to control Covid-19 infection



### Trusted professionals



### Continuity of care

